



## FAQ

- [What is „stealth mode“?](#)
- [How do I set the charge limit?](#)
- [How do I set the lower charge limit?](#)
- [How do I change my theme color?](#)
- [How do I set the custom alarm sound?](#)
- [How do I stop the alarm?](#)
- [Why will Battery Limiter prevent my computer to go to sleep mode?](#)

---

What is „stealth mode“?

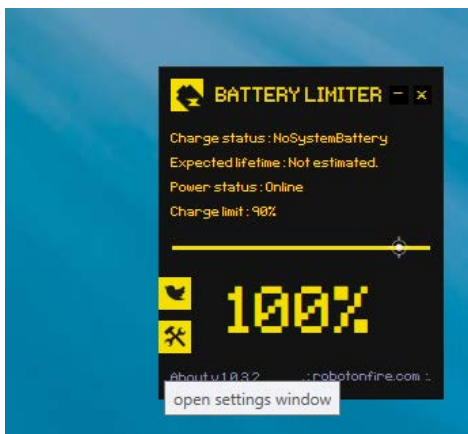


Battery Limiter starts in “stealth mode” by default, upon installation. This means that icon will appear in tray bar and main user interface will stay hidden. Default settings

will also include visual alarm by default, meaning even if you don't see the main UI on your desktop, when the alarm sounds Battery Limiter will show you animated notification.

---

How do I set the charge limit?



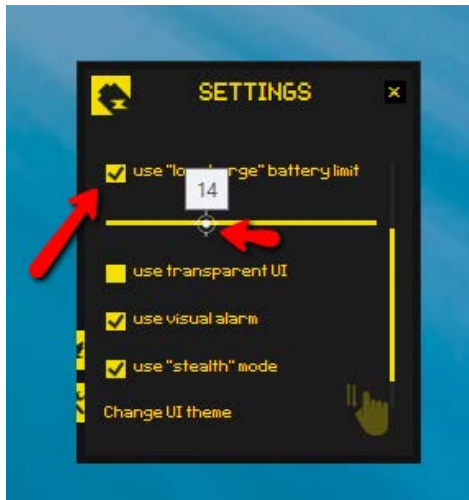
There is a slider control on Battery Limiter's main UI. Use this slider control to set the charge limit to your best judgement. Slider ranges from 30% to 96%. Battery Limiter's only purpose is to prevent overcharging and avoid the most stressful battery charges. This is why slider limit is set to 96% max.





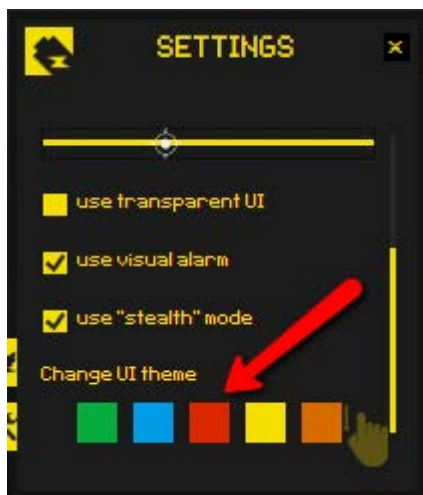
# BATTERY LIMITER USER MANUAL

How do I set the lower charge limit?



Use settings page and activate the “use lower limit charge” option. This will show you a new slider inside settings page which you can use to set your lower limit preference.

How do I change my theme color?



Inside settings page there is also a color box, down at the bottom. Slide your mouse over and it will show you the colors available to choose from. Click one of the colored boxes to change theme color.

How do I set the custom alarm sound?

Use settings page and activate the “use custom alarm sound” option. This will allow you to choose your custom .wav file as an alarm sound. If you deactivate this option again, Battery Limiter will fall back to default alarm sound.





# BATTERY LIMITER USER MANUAL

How do I stop the alarm?

Once your charge limit has been reached, the alarm will start. To stop the alarm simply unplug your device and let it run on battery.

---

Why will Battery Limiter prevent my computer to go to sleep mode?

The answer is very simple. If your computer would go to sleep mode Battery Limiter will not work and will not be able to alarm the user to unplug his device. Still after you have charged your computer and unplugged it you can still put your computer to sleep mode by closing the lid. Battery Limiter will only keep your computer from going to sleep mode while laptop lid is open.

---

Thank you for using Battery Limiter. Please follow us on [Twitter](#) or [Facebook](#) for current releases.

Official Battery Limiter website:

<http://www.robotonfire.com/bl>

